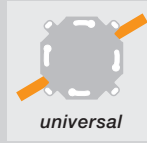
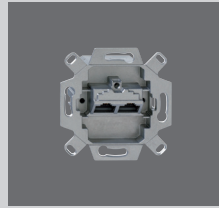
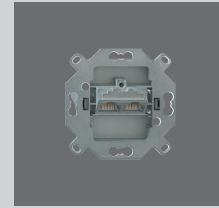


Systemoverview compact components

Designs of the UAE-Cat.6A-iso-, UAE-real.Cat.6a- and UAE-Cat.5e-Universal-jacks



Cat.6A-iso-compact-jacks for generic networks



Cat.6A-iso-compact-jacks for generic networks, for trunking systems



Up

	Up	Up rw*
	Cat.6A iso	
1-way	136 102 03	136 112 03
2-way	136 102 07	136 112 07
	real.Cat.6a	
1-way	138 102 03	138 112 03
2-way	138 102 07	138 112 07
	Cat.5e	
1-way	135 102 03	135 112 03
2-way	135 102 07	135 112 07

	Up	Up rw*
	Cat.6A iso	
1-way	136 102 21	136 112 21
2-way	136 102 22	136 112 22
	real.Cat.6a	
1-way	138 102 21	138 112 21
2-way	138 102 22	138 112 22
	Cat.5e	
1-way	135 102 21	135 112 21
2-way	135 102 22	135 112 22



Up 0

	Up 0
	Cat.6A iso
1-way	136 104 03
2-way	136 104 07
	real.Cat.6a
1-way	138 104 03
2-way	138 104 07
	Cat.5e
1-way	135 104 03
2-way	135 104 07

	Up 0
	Cat.6A iso
1-way	136 104 31
2-way	136 104 32
	real.Cat.6a
1-way	138 104 31
2-way	138 104 32
	Cat.5e
1-way	135 104 31
2-way	135 104 32

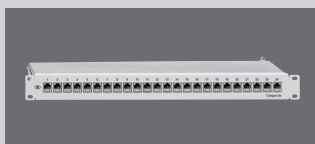
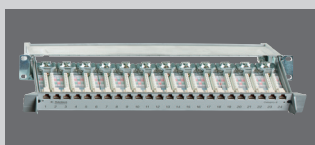


Up 0 S

mounting bracket: over break off mounting ring of the Up 0-design

	Up 0 S
	Cat.6A iso
1-way	136 104 33
2-way	136 104 34
	real.Cat.6a
1-way	138 104 33
2-way	138 104 34
	Cat.5e
1-way	135 104 33
2-way	135 104 34

Patch panel for generic networks (24 Ports), With Slide-in unit or in basic-design



	PP-24/1
	Cat.6A iso
basic	236 101 10
	real.Cat.6a
with slide-in unit	238 101 00
basic	238 101 10
	Cat.5e
with slide-in unit	235 101 00
basic	235 101 10

Labeling strip for all patch panel
235 100 01

* rw = pure white

■ = Phased-out – successor Cat.6A iso